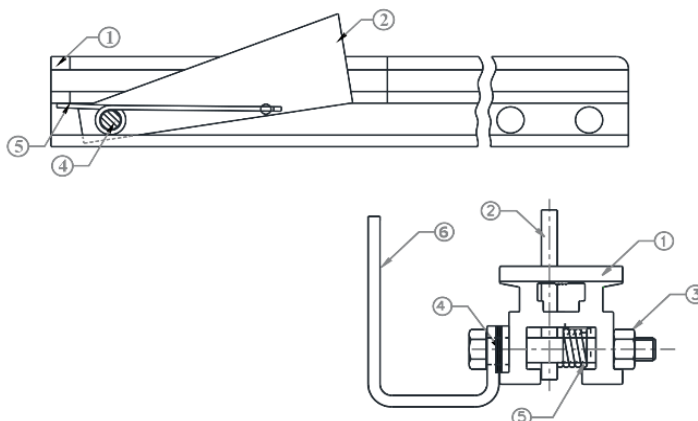


**Aluminium rail extremity for KS 8000 system**


- Equipped with a manual spring lock that prevents the Trolley from accidentally moving out of the rail.
- Non-inverting system (L-shaped end) to prevent installing the device upside down on the anchor line.



- 1 : Lower end of the rail - 2 : Manual spring lock – 3 : Hex head bolt  
 4 : Hex head screw – 5 : Left twist spring - 6 : Non-inverting system

**Material of components:**

Aluminium

<b>Length:</b>		<b>Weight:</b>
3 m		4.10 kg

**KRATOS SAFETY**

689 Chemin du Buclay  
 38540 Heyrieux – FRANCE

Tel : +33 (0)4 72 48 78 27  
 Fax : +33 (0)4 72 48 58 32

[www.kratossafety.com](http://www.kratossafety.com) / [info@kratossafety.com](mailto:info@kratossafety.com)

**HS CODE**

76161000

**CARTON SIZE / PCS.**

302 x 10 x 12 cm / 6

**AET N°8836 I2 E1**

Satra Technology Centre, N°0321  
 Wyndham Way, Telford Way, Kettering  
 Northamptonshire, NN16 8SD, United Kingdom

**ARTICLE 11 GB07/73551**

SGS United Kingdom Ltd., N°0120  
 Unit 202B, Worle Parkway,  
 Weston-super-Mare, BS22 6WA, United Kingdom