

# FUGE RESCUE

Emergency Escape Breathing Device (EEBD)

P/N 403050000

**FUGE RESCUE** is a Self Contained Breathing Apparatus designed for escape (Emergency Escape Breathing Device) that in case of emergency supplies, on demand, delivers an air flow for a minimum guaranteed time of **15 minutes**. It is meant to be used in all environments where dangerous situations may occur due to fire fumes or lack of oxygen.



**FUGE RESCUE** adds the highest degree of safety and comfort to the astonishing field of vision of SPASCIANI **TR 2002 BN** mask which is part of it.

**FUGE RESCUE** is fitted with an automatic **demand valve** which keeps a positive pressure in the mask thus avoiding any possible inward leakage of contaminated air from the outside. Should it be necessary, the positive pressure mode can be manually activated by acting on the special button that acts as a supplementary air command, too.

The **supporting harnesses** of **FUGE RESCUE** is fitted with a set of straps to keep the cylinder in position and to allow the operator to wear it in the most comfortable way according to everyone's needs and allowing to move even in narrow spaces.

**FUGE RESCUE** comes with one 2 L 300 bar steel cylinder granting 15 minutes duration.

# FUGE RESCUE

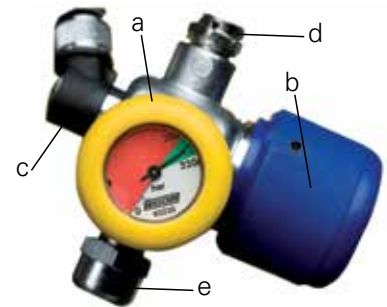
## Emergency Escape Breathing Device (EEBD)

P/N 403050000

The **pressure reducer** and the **cylinder valve** are integrated and provided with **gauge** (a) indicating the pressure inside the cylinder. The pressure reducer keeps the outlet pressure steady throughout the emptying of the cylinder. The opening/closing knob (b) is anti-slip and easily allows to open/close of the air supply.

In the reducer there are also:

- The connection for the feeding hose (c), i.e. the hose connecting to the demand valve for the medium pressure air supply
- The safety valve (d)
- The refilling connector (e)



### TECHNICAL DATA

**Pressure reducer:** piston with compensator

**Automatic Demand Valve:** with supplementary supply button

**Volume/ Working Pressure of Cylinder:** 2 l / 300 bar

**Air reserve:** 552 N litres

**Duration:** 15 min

### MATERIALS

TR 2002 BN CL3 mask:

Outer face blank:	EPDM
Panoramic Visor:	Scratch and solvent resistant polycarbonate
Inner Nose Cup:	TPE
Five arm head harness:	EPDM
Carrying strap:	PVC
Harness / Straps:	Self extinguishing webbing with nylon buckles
Pressure Reducer:	Brass alloy nickel plated
Automatic Demand Valve:	Fibre glass reinforced nylon housing
Cylinder:	Steel

### CLASSIFICATION

Lung governed demand self-contained open-circuit compressed air breathing apparatus with full face mask assembly for escape, classified on the basis of a nominal duration of 15 minutes, as specified in the **EN 402:2003** standard.



YOUR SAFETY MAKER



# FUGE RESCUE

Emergency Escape Breathing Device (EEBD)

P/N 403050000

## CERTIFICATION

**FUGE RESCUE** is a Respiratory Protective Device (RPD) **CE** certified in accordance with **art. 10** of the PPE Directive **89/686/EEC**; it meets the requirements of the relevant technical standard **EN 402:2003**.

**FUGE RESCUE** is a PED set, **CE** certified in accordance with **PED 97/23/EC** Directive.

## STORAGE

Store at temperatures between -20 and +50°C and with RH <80%

## WEIGHT

6,7 Kg approx., complete set with fully charged cylinder

---

For more information please check the notes along with the products or the ones published on the website: [www.spasciani.com](http://www.spasciani.com)

**NOTE: SPASCIANI SpA does not take any responsibility for any possible and unintentional mistake and reserve the faculty of modify materials and technical characteristics of its products at any time and without any notice. The pictures are purely indicative and may not represent the actual product described in the next.**