

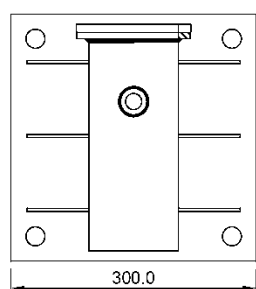
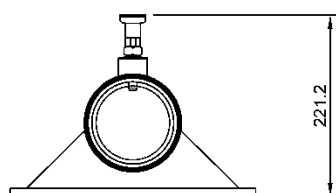
MultisafeWay






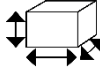

Ø 23.0 mm



240.0 mm



HS CODE
7610 90 10
CARTON SIZE / PCS.
30 x 30 x 30 cm / 1
Certificate of test SPC0223656/1414 Issue 3 Extension 1
Satra Technology Centre, N° 0321 Wyndham Way, Telford Way, Kettering Northamptonshire, NN16 8SD, United Kingdom
ACKNOWLEDGEMENT OF RECEIPT N°1120/1/2020
Technická Inšpekcia, a.s. N°1354 Trnavská cesta 56, 821 01 Bratislava, Slovenská Republika

REF.	FA 60 022 12
CE	EN 795:2012 Type A
	---
	---
MAT.	
	M16 (X4)
R (kN) / MBS (kN)	---
+	FA 60 022 00 FA 60 105 00
	12.48 KG



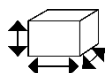
Nombre d'utilisateurs
Number of users
Cantidad de usuarios
Quantità di utilizzatori
Anzahl der Benutzer



Charge maxi admissible
Max. allowable load
Carga máxima admisible
Peso massimale
Zulässige Höchstlast

DIM. ↑↓

Hauteur
Height
Altura
Altezza
Höhe



Fixations à utiliser
Fasteners to use
Fijaciones que deben usarse
Elementi di fissaggio da utilizzare
Zu verwendende Befestigungen

+

À utiliser avec
To be used with
Para usar con
Ad essere utilizzato con
Verwendet werden soll mit