

# FUGE

**Emergency Escape Breathing Device (EEBD)**  
**P/N 403030000**

**FUGE** is a Self Contained Breathing Apparatus designed for escape (Emergency Escape Breathing Device) that in case of emergency supplies, on demand, delivers an air flow for a minimum guaranteed time of **15 minutes**. It is meant to be used in all environments where dangerous situations may occur due to fire fumes or lack of oxygen.



**FUGE** adds the highest degree of safety and comfort to the astonishing field of vision of SPASCIANI **TR 2002 BN** mask which is part of it.

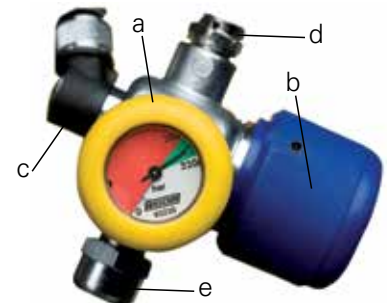
**FUGE** is fitted with an automatic **demand valve** which keeps a positive pressure in the mask thus avoiding any possible inward leakage of contaminated air from the outside. Should it be necessary, the positive pressure mode can be manually activated by acting on the special button that acts as a supplementary air command, too.

The **pressure reducer** and the **cylinder valve** are integrated and provided with **gauge** (a) indicating the pressure inside the cylinder. The pressure reducer keeps the outlet pressure steady throughout the emptying of the cylinder.

The opening/closing knob (b) is anti-slip and easily allows to open/close of the air supply.

In the reducer there are also:

- The connection for the feeding hose (c), i.e. the hose connecting to the demand valve for the medium pressure air supply
- The safety valve (d)
- The refilling connector (e)



**FUGE** comes with one **2 litres 300 bar steel cylinder** granting 15 minutes duration.



# FUGE

## Emergency Escape Breathing Device (EEBD) P/N 403030000

**FUGE** is held in a **carrying bag** whose purpose, besides containing all the aforesaid fittings, is also to protect the set from any possible tampering.

Its yellow colour and the photoluminescent strips allow an easy identification making it visible also in the dark and differing it from other emergency devices typically orange.

It has a velcro closure and a grip strap for a fast opening as well as a warranty seal.

The bag is provided with a resistant carrying shoulder strap.

One side of the bag has a transparent window making the gauge always visible and allowing to check at any time the charging status of the cylinder which is contained in it.

The bottom of the bag has a foam base with fixing belts to accommodate the pressure reducer and keep the whole fittings in the correct position during transport and mask pulling out.

### TECHNICAL DATA

**Pressure reducer:** piston with compensator

**Automatic Demand Valve:** with supplementary supply button

**Volume/ Working Pressure of Cylinder:** 2 l / 300 bar

**Air reserve:** 552 N litres

**Duration:** 15 min

### MATERIALS

TR 2002 BN CL3 mask:

Outer face blank:	EPDM
Panoramic Visor:	Scratch and solvent resistant polycarbonate
Inner Nose Cup:	TPE
Five arm head harness:	EPDM
Carrying strap:	PVC

Carrying bag: Strong fabric PVC coated

Pressure Reducer: Brass alloy nickel plated

Automatic Demand Valve: Fibre glass reinforced nylon housing

Cylinder: Steel

### CLASSIFICATION

Lung governed demand self-contained open-circuit compressed air breathing apparatus with full face mask assembly for escape, classified on the basis of a nominal duration of 15 minutes, as specified in the **EN 402:2003** standard.





YOUR SAFETY MAKER



# FUGE

Emergency Escape Breathing Device (EEBD)

P/N 403030000

## CERTIFICATION

**FUGE** is a Respiratory Protective Device (RPD) **CE** certified in accordance with **art. 10** of the PPE Directive **89/686/EEC**; it meets the requirements of the relevant technical standard **EN 402:2003**.

**FUGE** is a PED set, **CE** certified in accordance with **PED 97/23/EC** Directive.

## STORAGE

Store at temperatures between -20 and +50°C and with RH <80%

## WEIGHT

6,5 Kg approx., complete set with fully charged cylin

---

For more information please check the notes along with the products or the ones published on the website: [www.spasciani.com](http://www.spasciani.com)

**NOTE: SPASCIANI SpA does not take any responsibility for any possible and unintentional mistake and reserve the faculty of modify materials and technical characteristics of its products at any time and without any notice. The pictures are purely indicative and may not represent the actual product described in the next.**